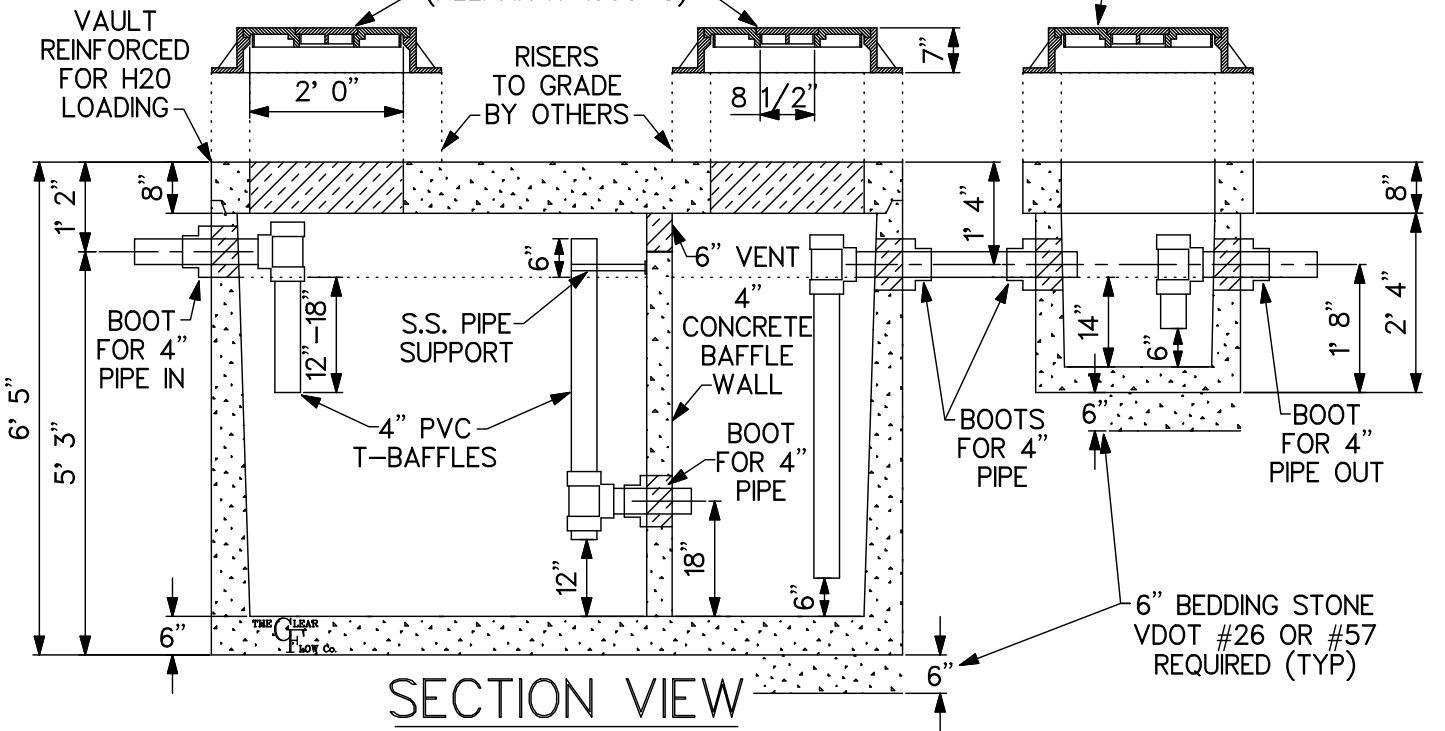


PLAN VIEW

STRUCTURES DESIGNED FOR
MAXIMUM 8 FT OF COVER

24" FRAME & COVER
w/8 3/4" CENTER LID
(NEENAH R-1900-C)

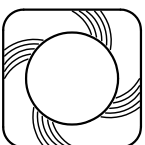
24" FRAME & COVER
w/8 3/4" CENTER LID
(NEENAH R-1900-C)



SECTION VIEW

NOTES:

1. VAULT SHIPPED IN ONE PIECE WEIGHING APPROX. 19,000 LBS.
2. RISERS TO GRADE NOT INCLUDED
3. MANHOLE FRAME & COVERS SHIPPED LOOSE FOR INSTALLATION BY THE CONTRACTOR
4. ALL INTERIOR PIPING & S.S. SUPPORT PROVIDED & INSTALLED BY THE CONTRACTOR
5. ALL PIPING SHALL BE PLUMB AND VERTICAL FOR PROPER FLOW
6. CALL BEDFORD COUNTY PSA PRIOR TO DELIVERY. COMPLIANCE INSPECTOR (540) 586 - 7679



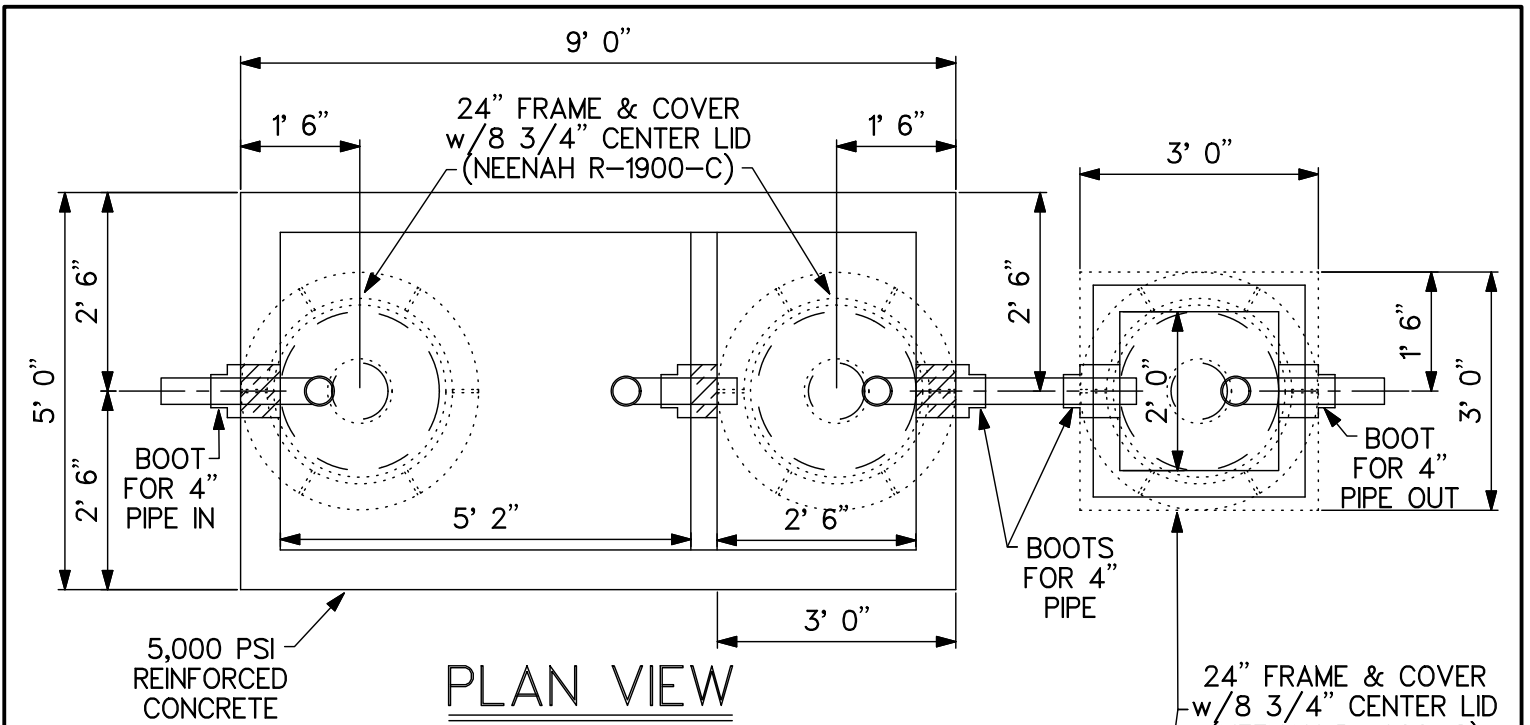
CLEAR FLOW
BY **CP & P**
CONCRETE PIPE & PRECAST, LLC
(800) 648 - 2678

SCALE: NONE

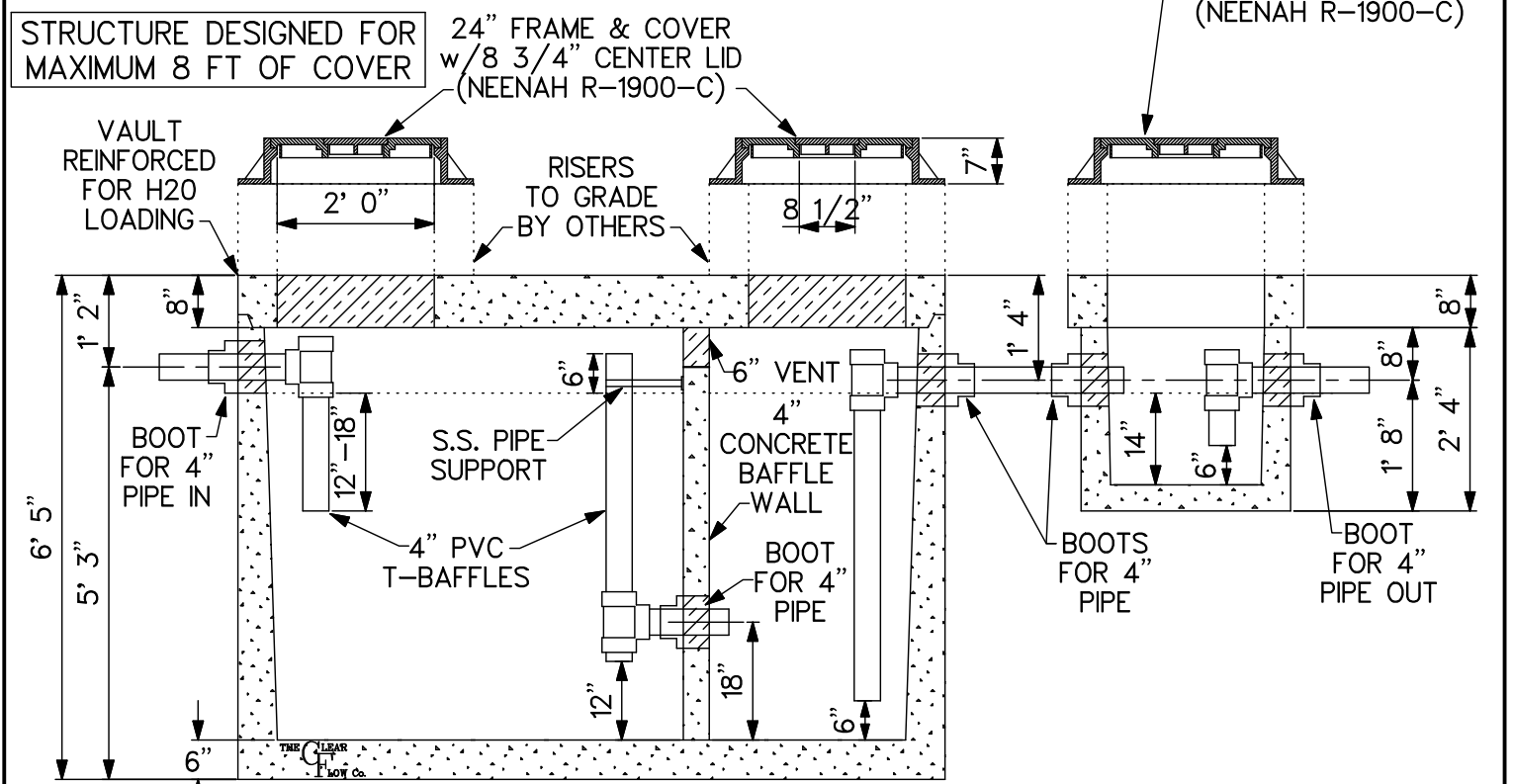
DATE: 6/06/12

DWG: GT-1000 BEDFORD CO

**BEDFORD CO. PSA 1,000 GALLON H2O
GREASE INTERCEPTOR w/SAMPLE BOX**



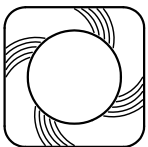
PLAN VIEW



SECTION VIEW

NOTES:

1. VAULT SHIPPED IN ONE PIECE WEIGHING APPROX. 19,000 LBS.
2. RISERS TO GRADE NOT INCLUDED
3. MANHOLE FRAME & COVERS SHIPPED LOOSE FOR INSTALLATION BY THE CONTRACTOR
4. ALL INTERIOR PIPING & S.S. SUPPORT PROVIDED & INSTALLED BY THE CONTRACTOR



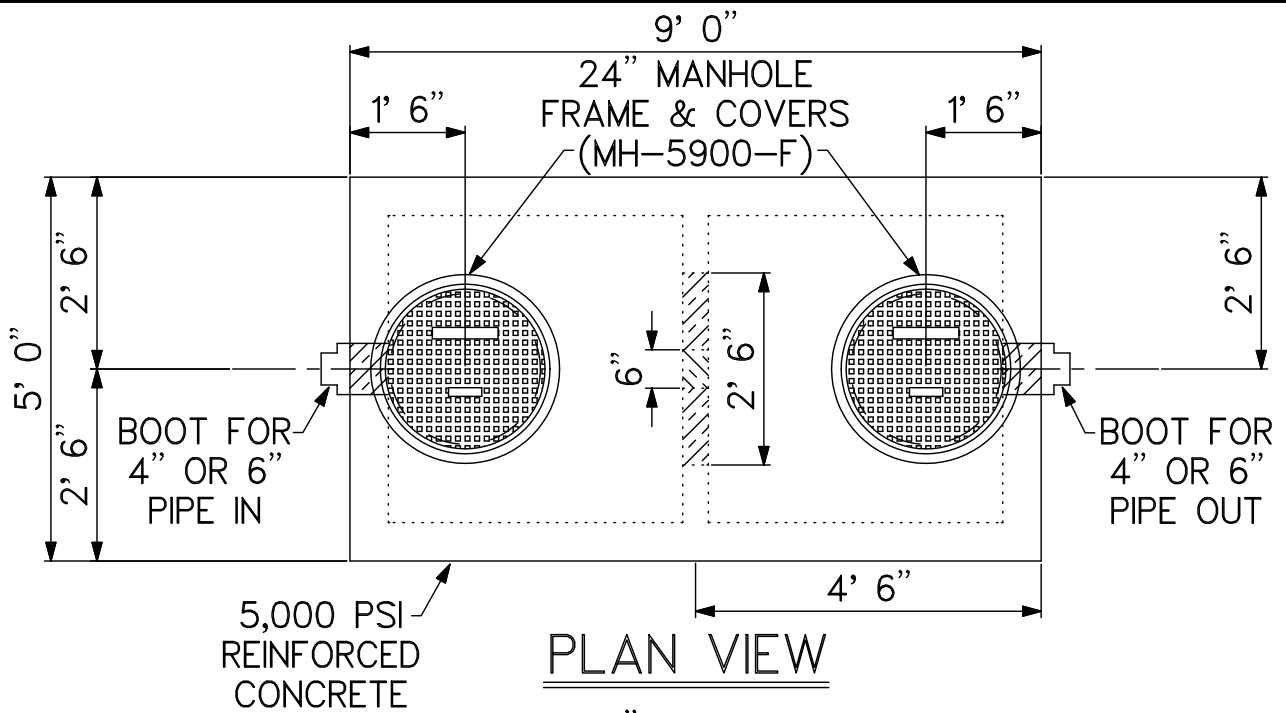
CLEAR FLOW
BY CP & P
 CONCRETE PIPE & PRECAST, LLC
 (800) 648 - 2678

SCALE: NONE

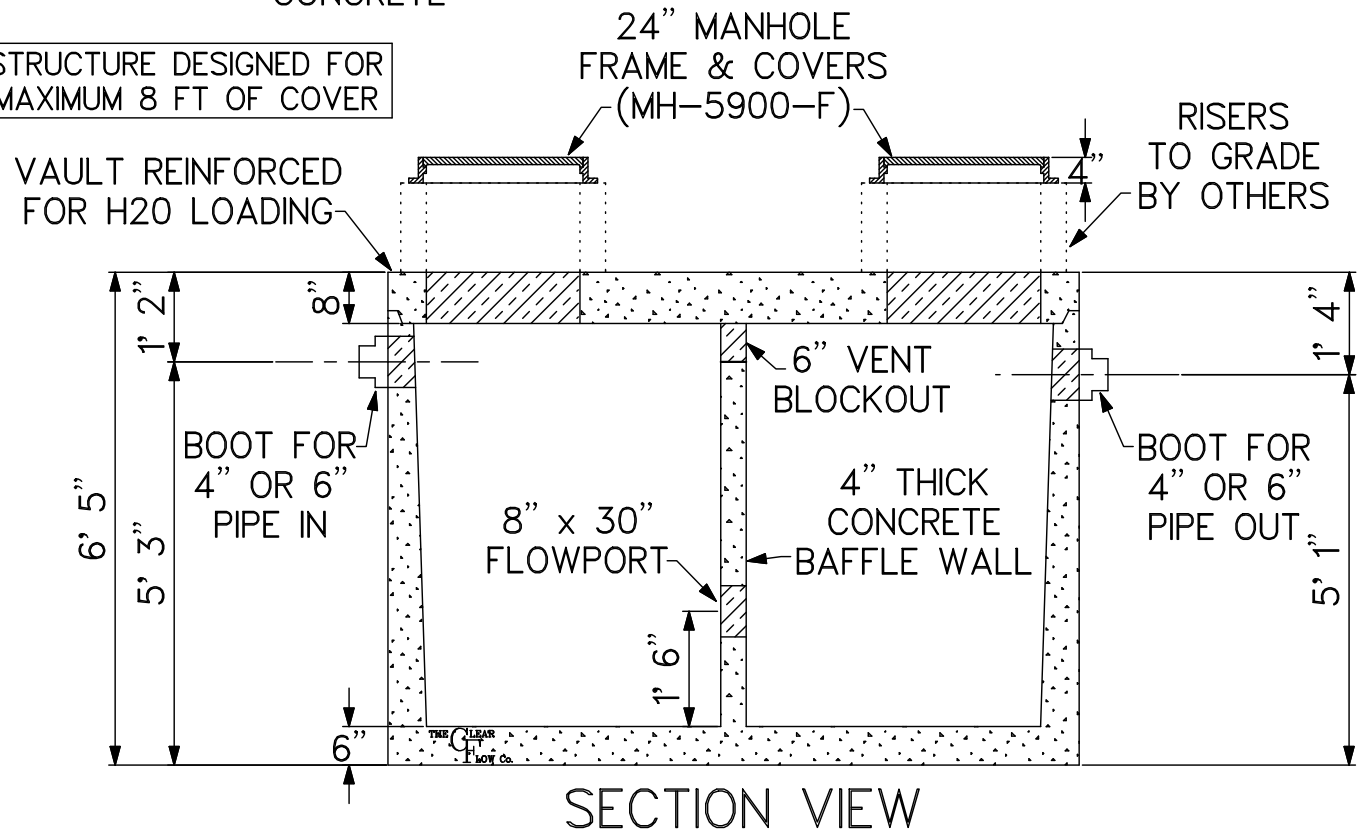
DATE: 6/09/10

DWG: GT-1000 CCUSA

**CCUSA 1,000 GALLON H2O
 GREASE INTERCEPTOR w/SAMPLE BOX**

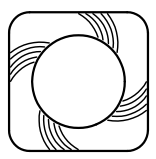


STRUCTURE DESIGNED FOR MAXIMUM 8 FT OF COVER



NOTES:

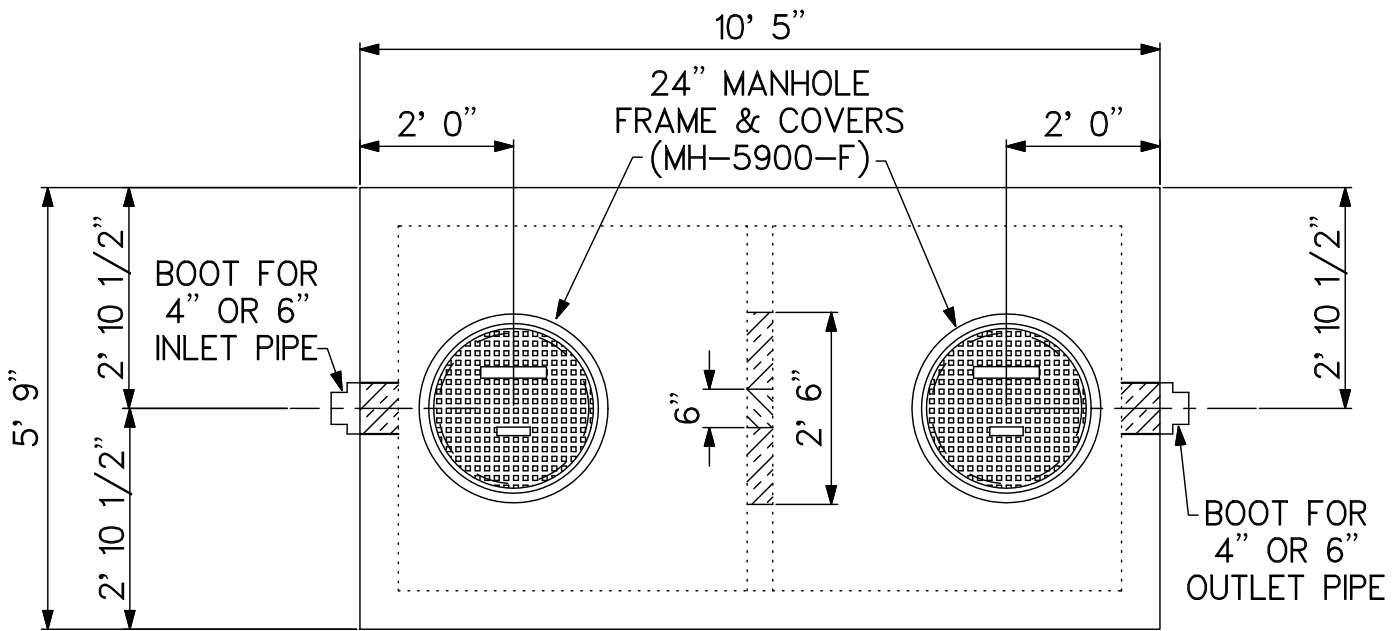
1. VAULT SHIPPED IN ONE PIECE WEIGHING APPROX. 19,000 LBS.
2. RISERS TO GRADE NOT INCLUDED
3. MANHOLE FRAME & COVERS SHIPPED LOOSE FOR INSTALLATION BY THE CONTRACTOR



CLEAR FLOW
 BY *CP & P*
 CONCRETE PIPE & PRECAST, LLC
 (800) 648 - 2678

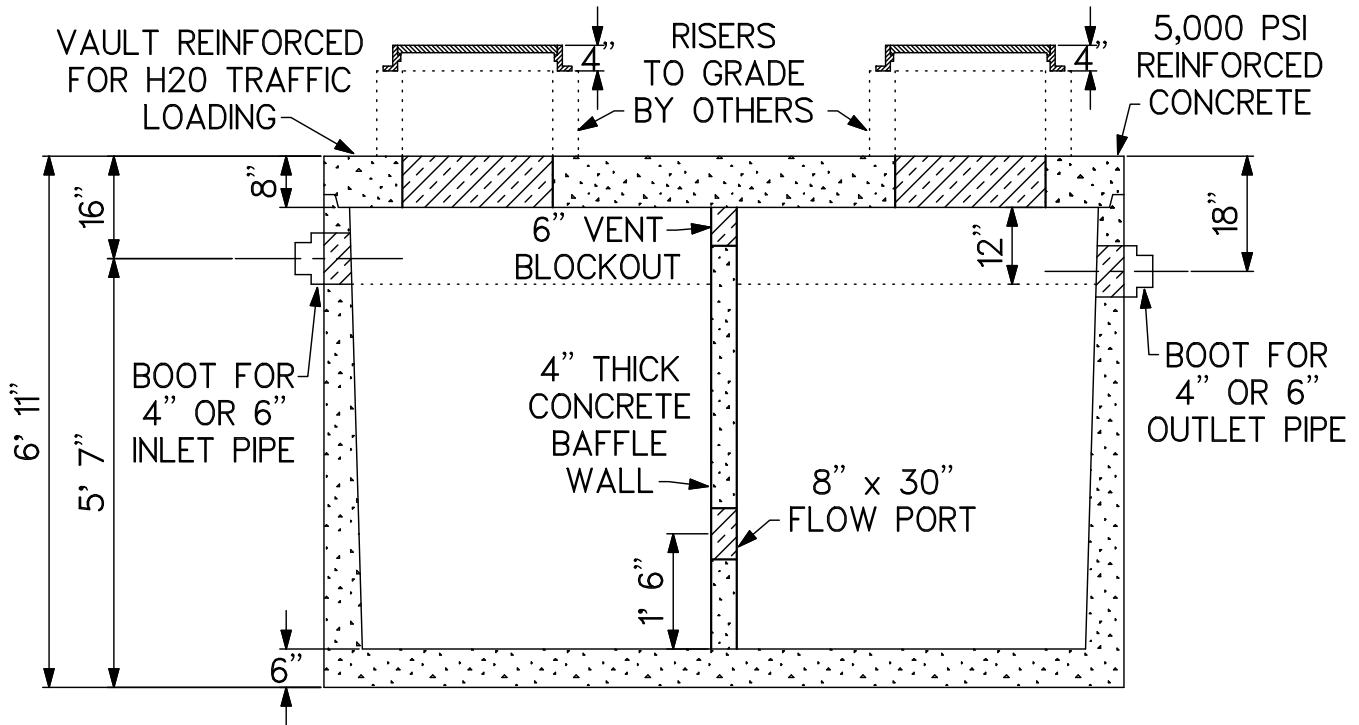
SCALE: NONE DATE: 11/21/07 DWG: GT-1000 H2O

1,000 GALLON H2O GREASE INTERCEPTOR



STRUCTURE DESIGNED FOR
MAXIMUM 8 FT OF COVER

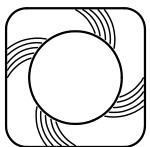
PLAN VIEW



SECTION VIEW

NOTES:

1. VAULT SHIPPED ASSEMBLED WEIGHING APPROXIMATELY 25,000 LBS.
2. MANHOLE FRAMES AND COVERS SHIPPED SEPARATELY FOR INSTALLATION BY CONTRACTOR
3. RISERS TO GRADE NOT INCLUDED



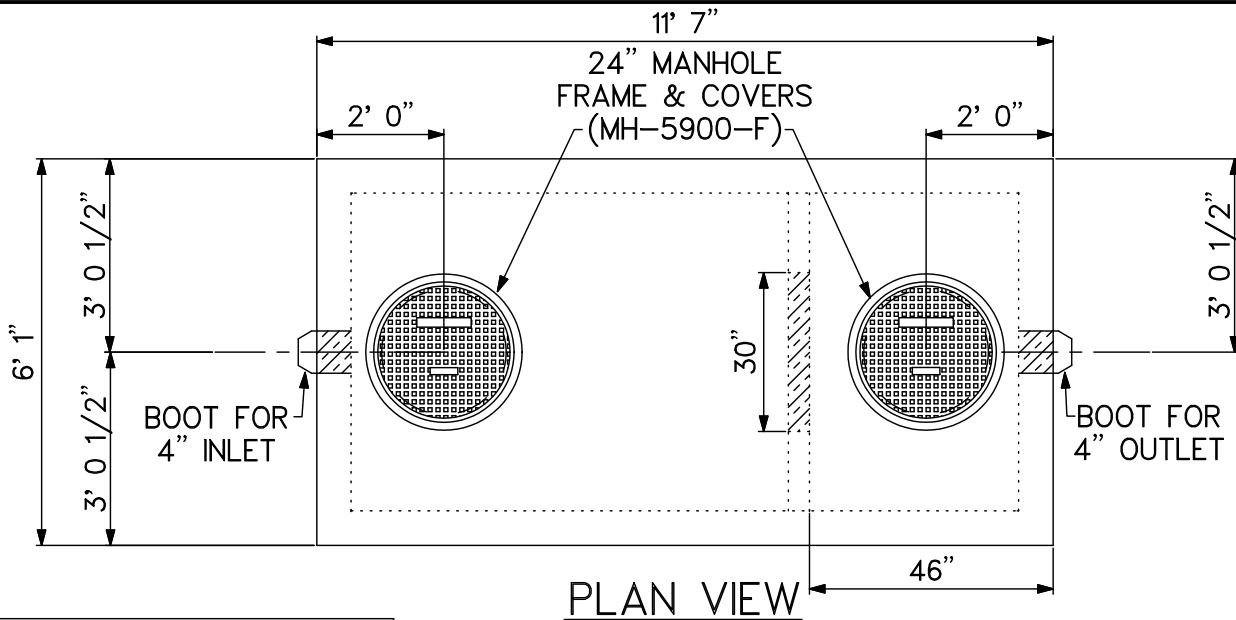
CLEAR FLOW
BY CP & P
CONCRETE PIPE & PRECAST, LLC
(800) 648 - 2678

SCALE: NONE

DATE: 11/21/07

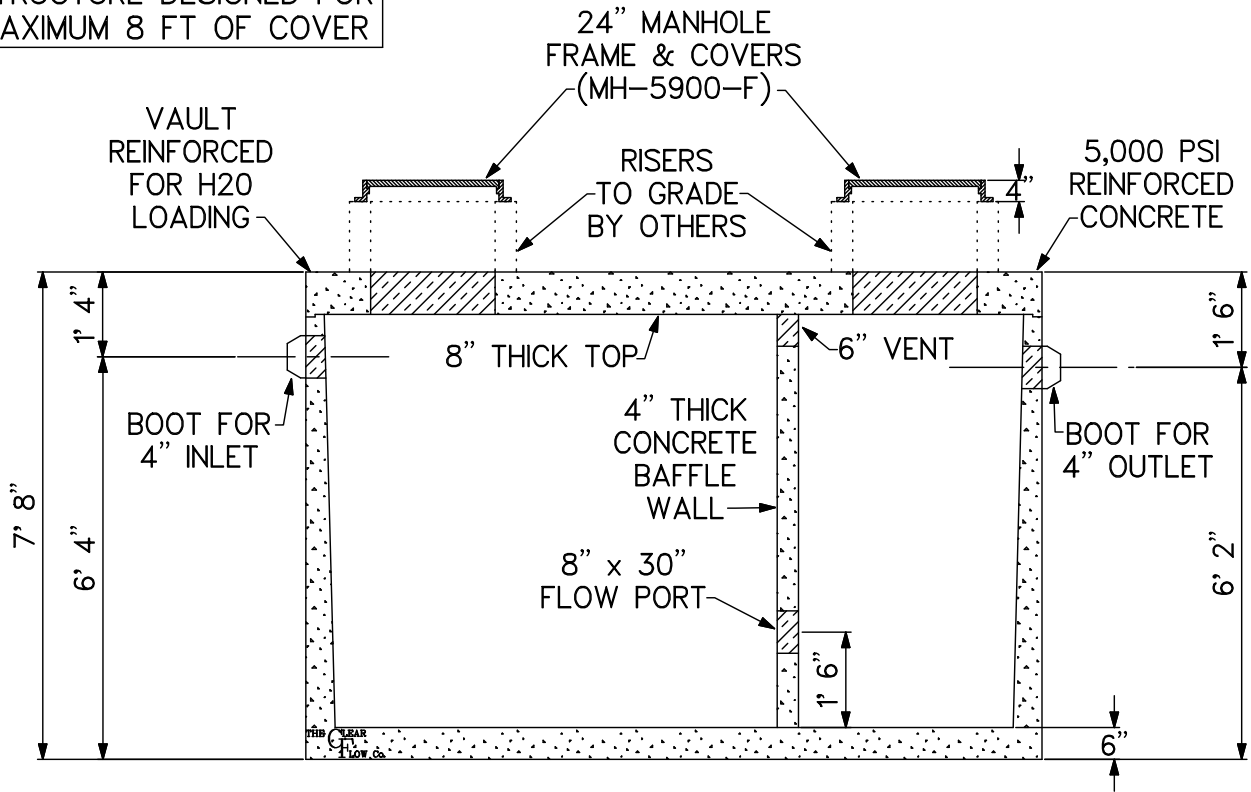
DWG: GT-1600 H2O

**1,600 GALLON H2O
GREASE INTERCEPTOR**



PLAN VIEW

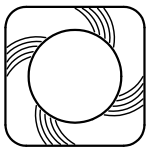
STRUCTURE DESIGNED FOR
MAXIMUM 8 FT OF COVER



SECTION VIEW

NOTES:

1. VAULT SHIPPED ASSEMBLED WEIGHING APPROXIMATELY 28,000 LBS.
2. RISERS TO GRADE NOT INCLUDED
3. MANHOLE FRAME & COVERS SHIPPED LOOSE FOR INSTALLATION BY CONTRACTOR
4. H2O LOAD RATED



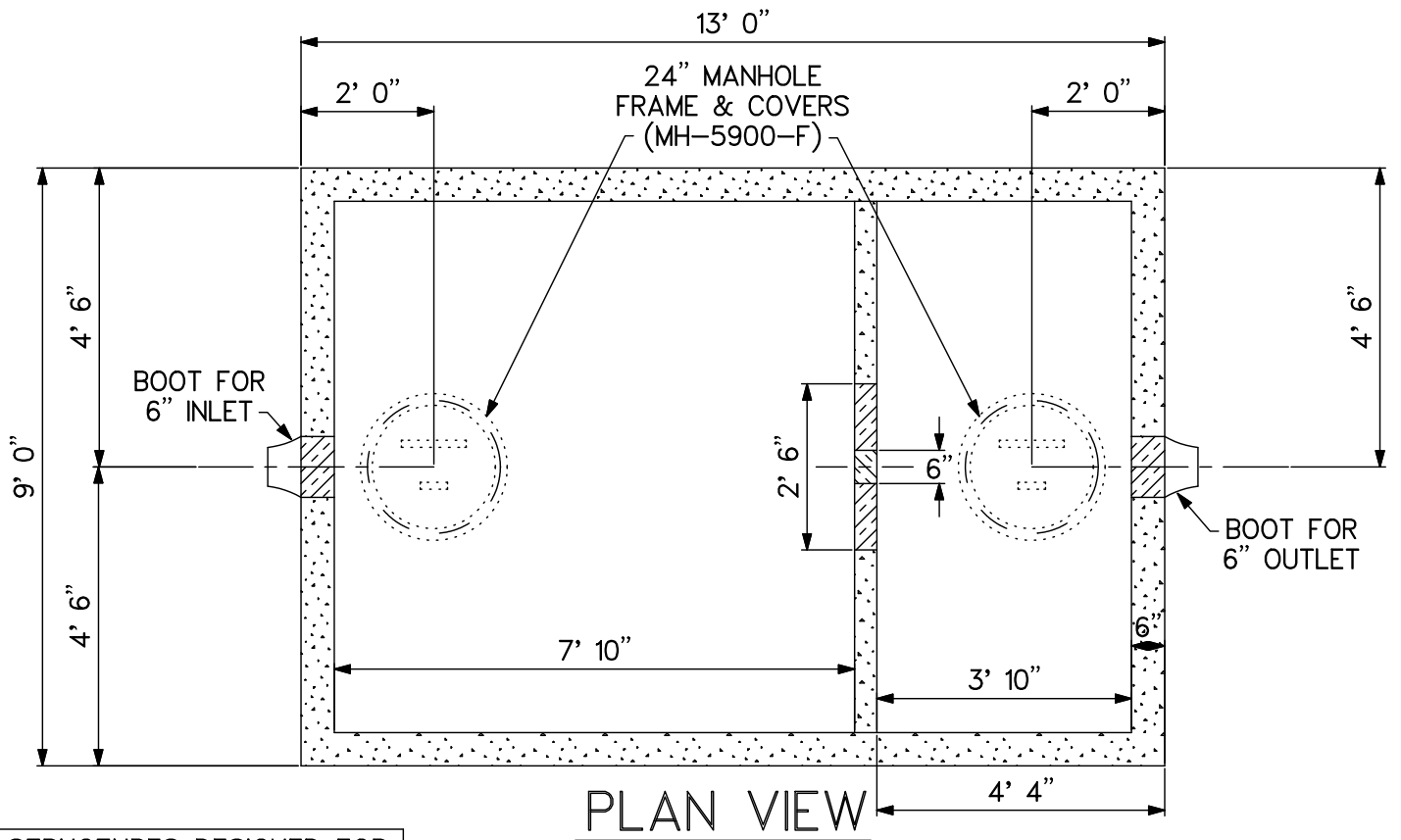
CLEAR FLOW
BY *CP & P*
CONCRETE PIPE & PRECAST, LLC
(800) 648 - 2678

SCALE: NONE

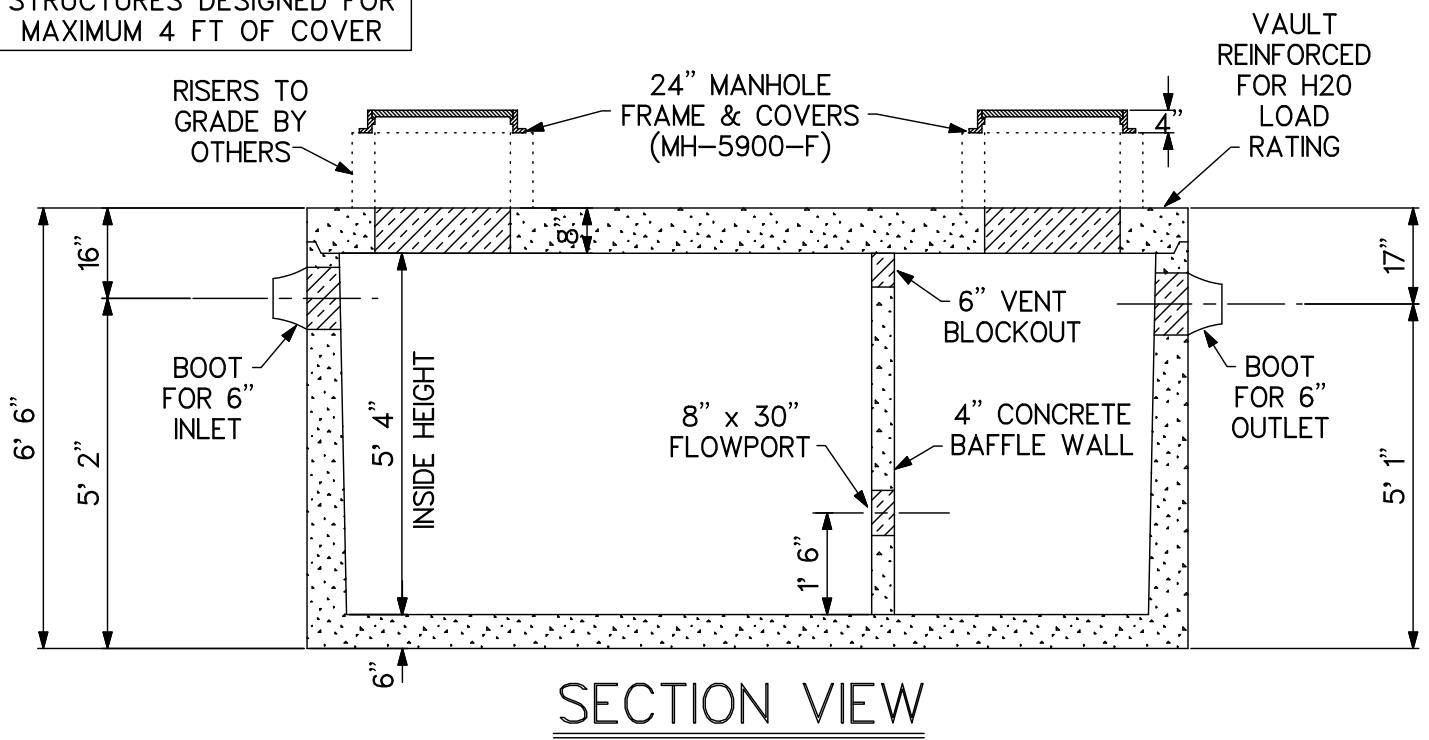
DATE: 11/21/07

DWG: GT-2500 H2O

**2,500 GALLON H2O
GREASE INTERCEPTOR**

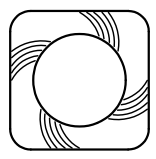


STRUCTURES DESIGNED FOR
MAXIMUM 4 FT OF COVER



NOTES:

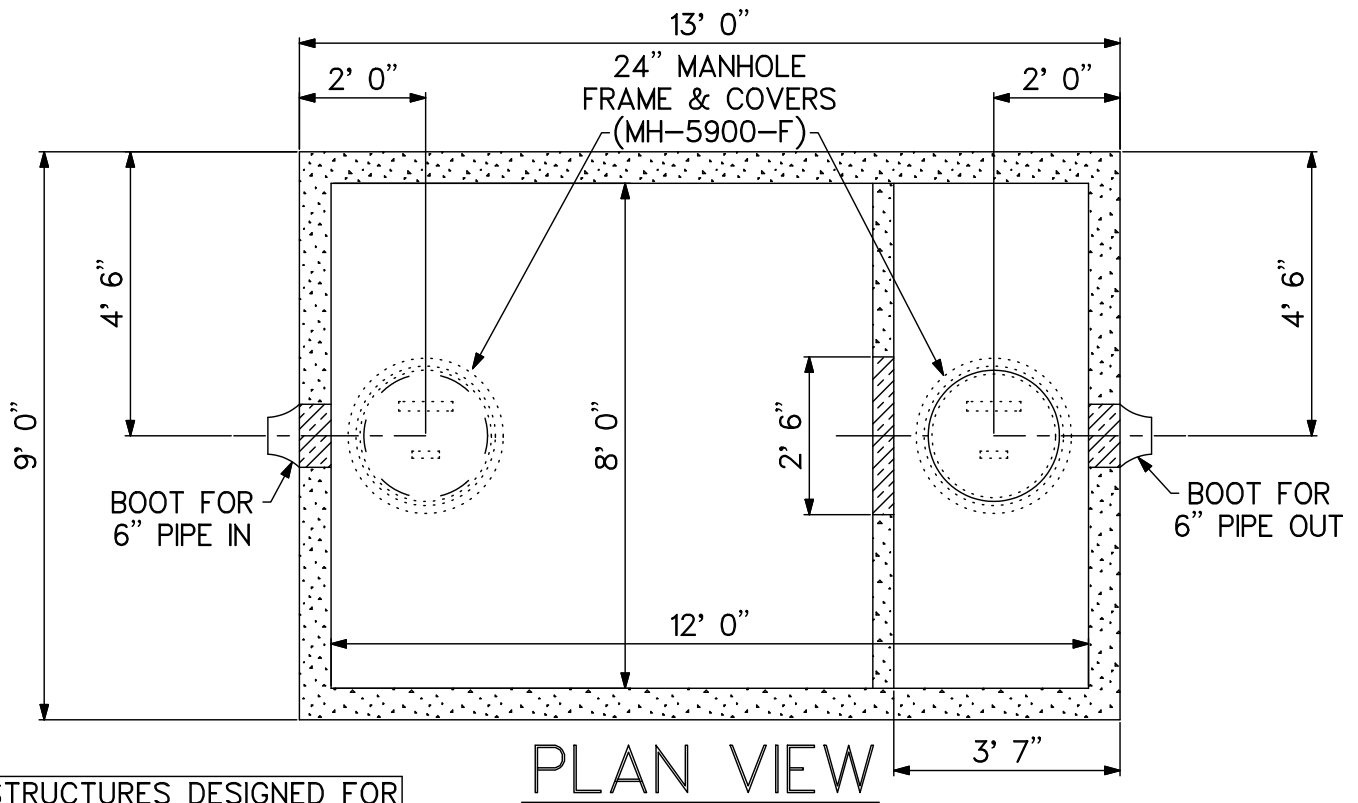
1. CLEAR FLOW VAULT SHIPPED ASSEMBLED WEIGHING APPROXIMATELY 44,000 LBS.
2. MANHOLE FRAME & COVERS SHIPPED LOOSE FOR INSTALLATION BY THE CONTRACTOR
3. RISERS TO GRADE BY OTHERS



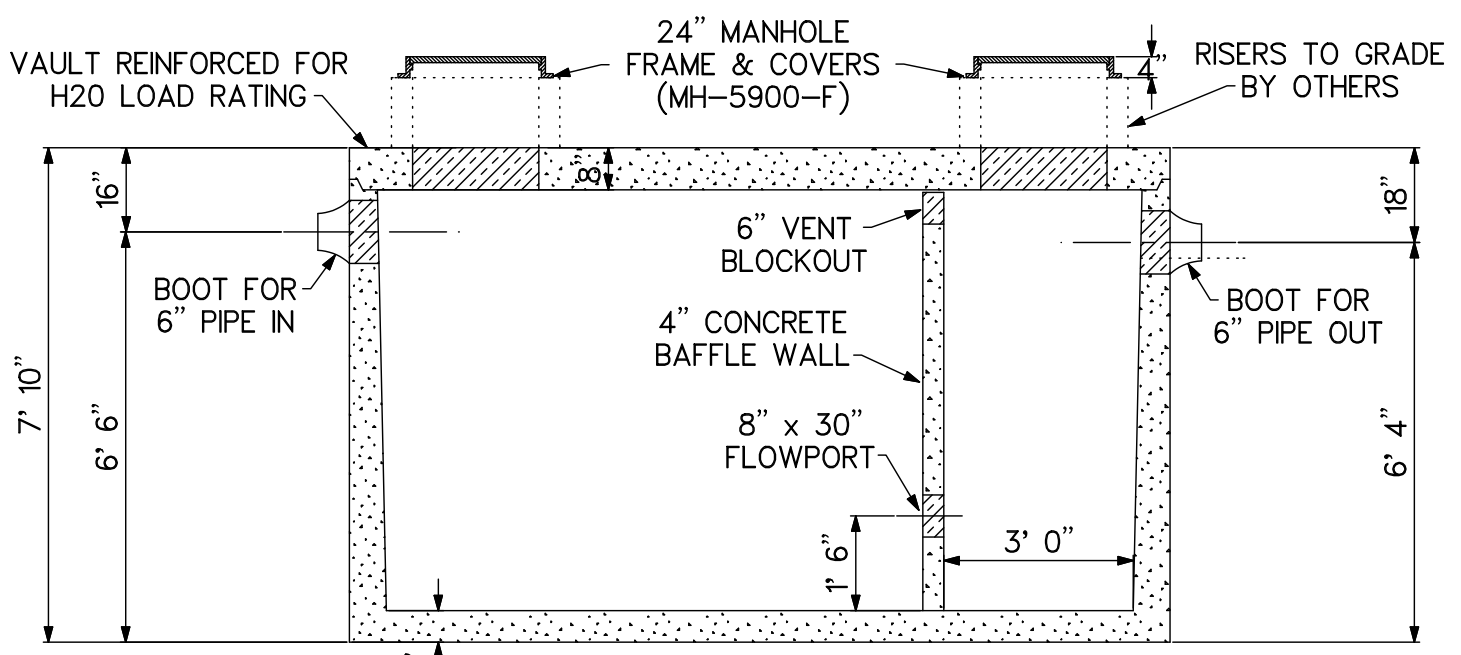
CLEAR FLOW
BY *CP & P*
CONCRETE PIPE & PRECAST, LLC
(800) 648 - 2678

SCALE: NONE DATE: 5/01/08 DWG: GT-3000 H20

**3,000 GALLON H2O
GREASE INTERCEPTOR**



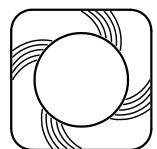
PLAN VIEW



SECTION VIEW

NOTES:

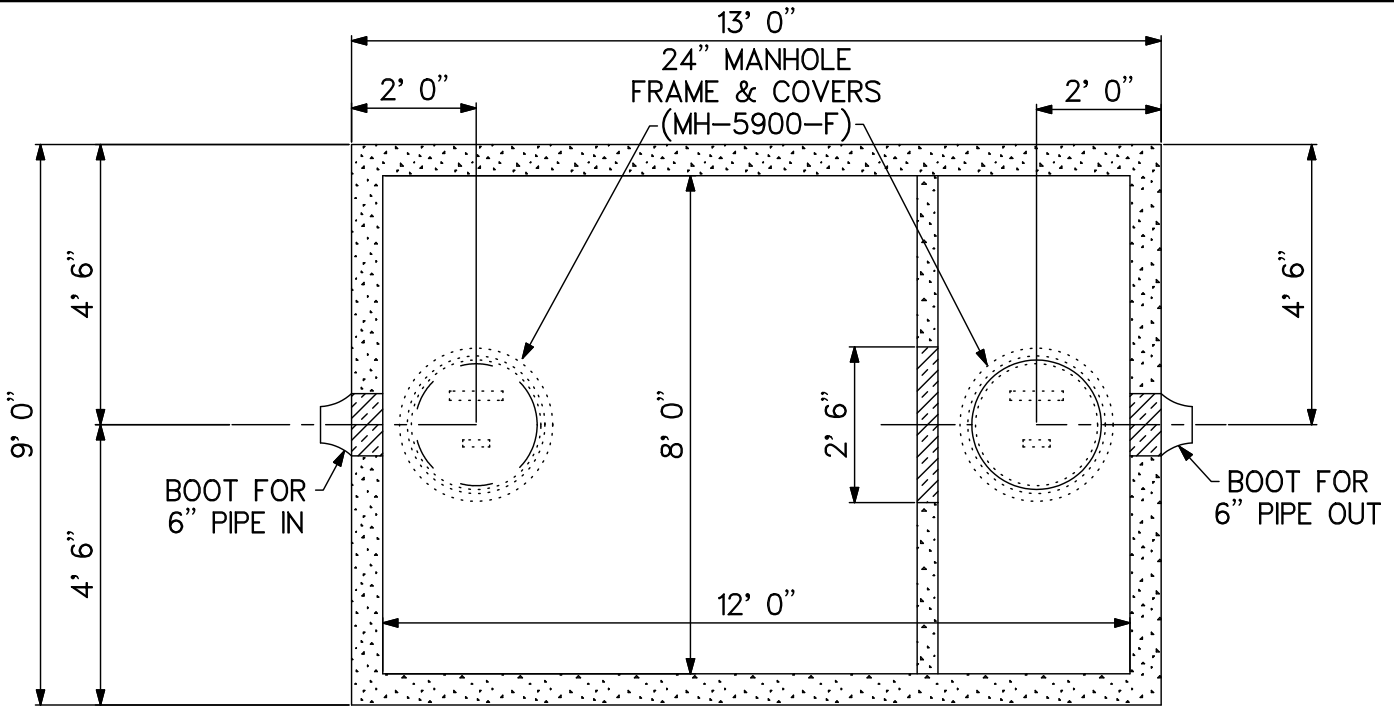
1. CLEAR FLOW VAULT SHIPPED IN SECTIONS TO BE ASSEMBLED BY THE CONTRACTOR. HEAVIEST LIFT WEIGHING APPROXIMATELY 48,000 LBS.
2. MANHOLE FRAME & COVERS SHIPPED LOOSE FOR INSTALLATION BY THE CONTRACTOR
3. RISERS TO GRADE BY OTHERS



CLEAR FLOW
BY CP & P
 CONCRETE PIPE & PRECAST, LLC
 (800) 648 - 2678

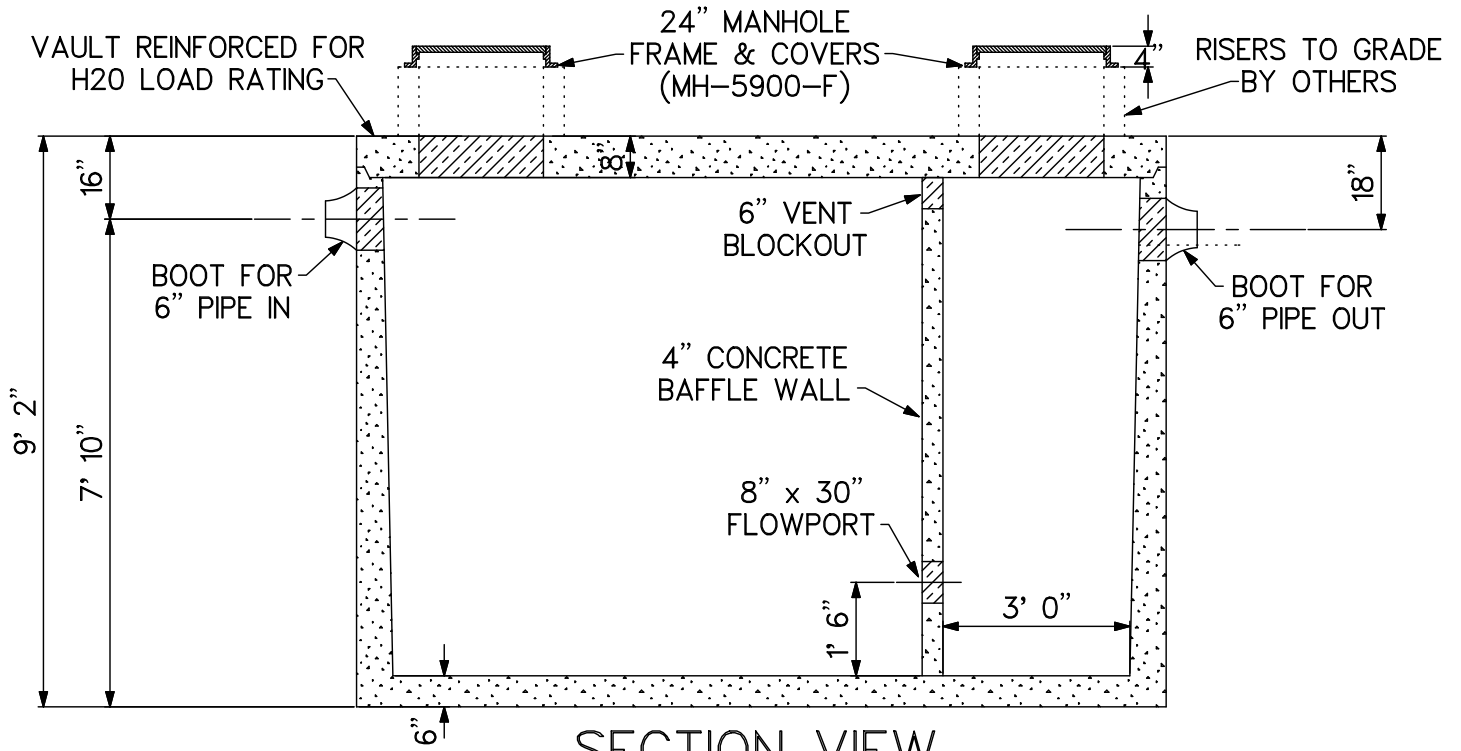
SCALE: NONE DATE: 11/30/04 DWG: GT-4000 H20

**4,000 GALLON H2O
 GREASE INTERCEPTOR**



STRUCTURES DESIGNED FOR
MAXIMUM 2 FT OF COVER

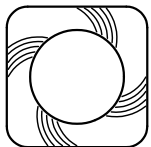
PLAN VIEW



SECTION VIEW

NOTES:

1. CLEAR FLOW VAULT SHIPPED IN SECTIONS TO BE ASSEMBLED BY THE CONTRACTOR. HEAVIEST LIFT WEIGHING APPROXIMATELY 48,000 LBS.
2. MANHOLE FRAME & COVERS SHIPPED LOOSE FOR INSTALLATION BY THE CONTRACTOR
3. RISERS TO GRADE BY OTHERS



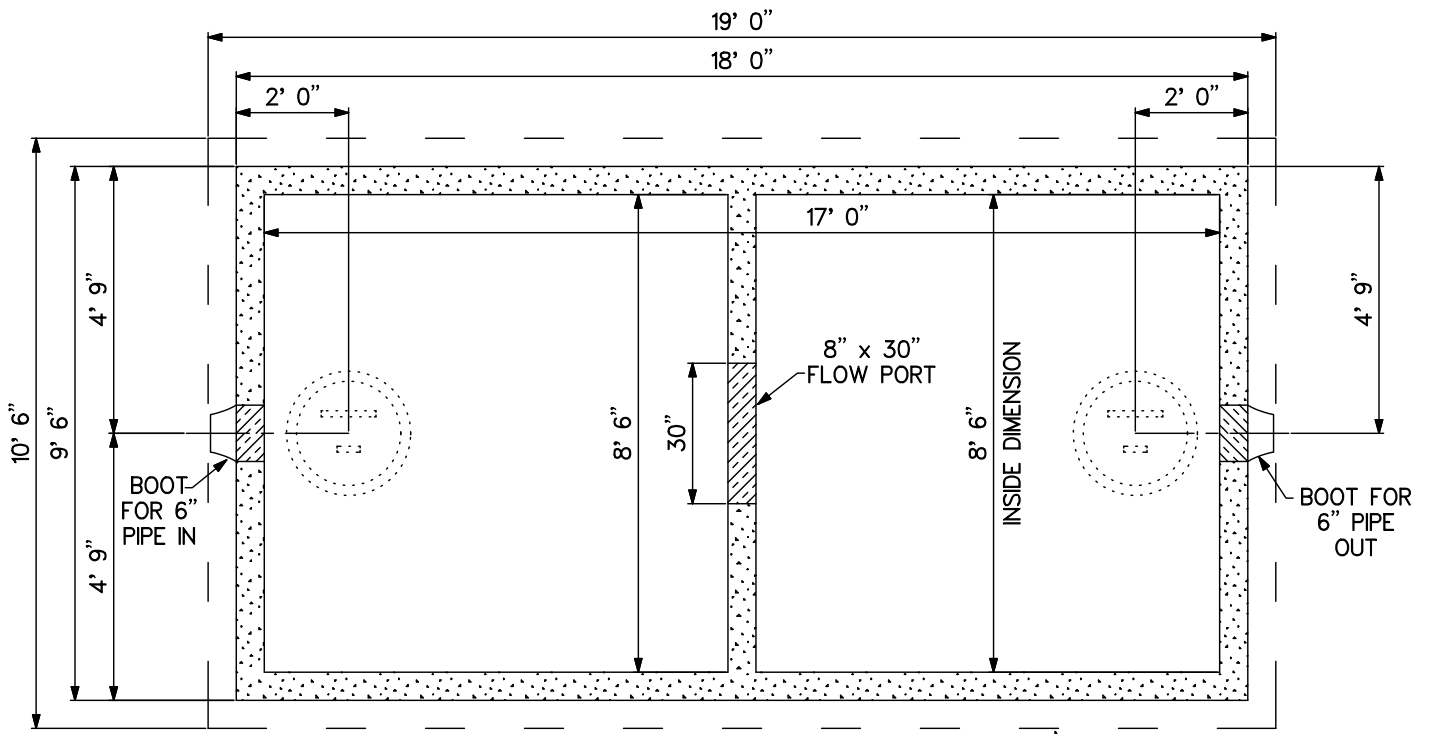
CLEAR FLOW
BY CP & P
CONCRETE PIPE & PRECAST, LLC
(800) 648 - 2678

SCALE: NONE

DATE: 2004

DWG: GT-5000 H2O

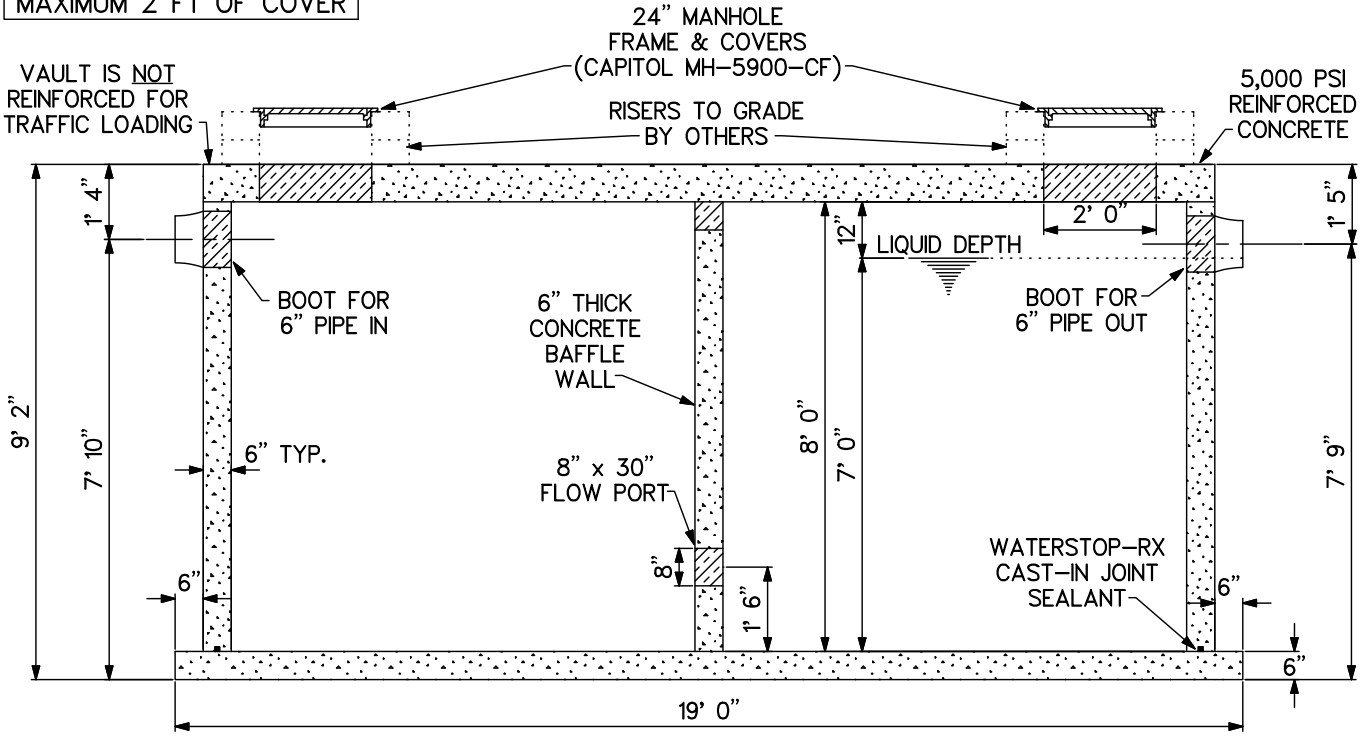
**5,000 GALLON H2O
GREASE INTERCEPTOR**



PLAN VIEW

STRUCTURE DESIGNED FOR
MAXIMUM 2 FT OF COVER

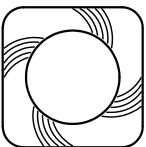
ANTI-FLOTATION
COLLAR



SECTION VIEW

NOTES:

1. CLEAR FLOW TANK SHIPPED WITH LID LOOSE – HEAVIEST LIFT APPROXIMATELY 54,000 LBS.
2. BOTTOM JOINT SEALED WITH WATERSTOP-RX – TOP JOINT SEALED WITH BITUMASTIC ROPE
3. NON-TRAFFIC RATED – AVAILABLE WITH H2O TRAFFIC RATING



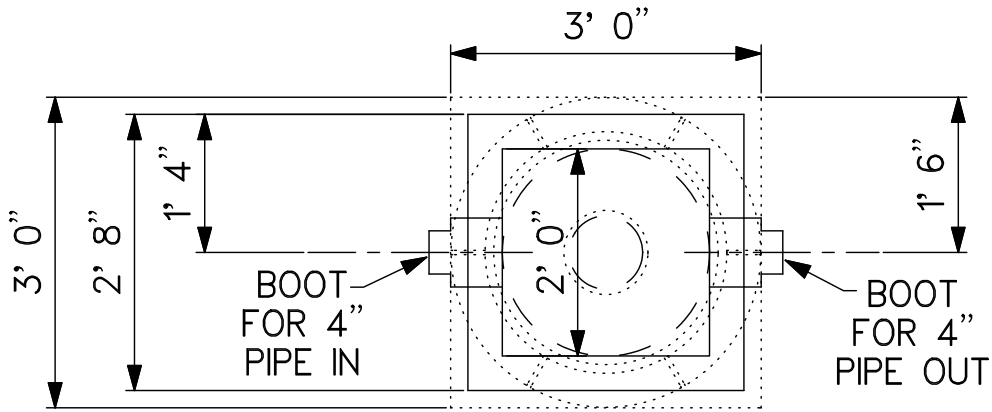
CLEAR FLOW
BY CP & P
CONCRETE PIPE & PRECAST, LLC
(800) 648 - 2678

SCALE: NONE

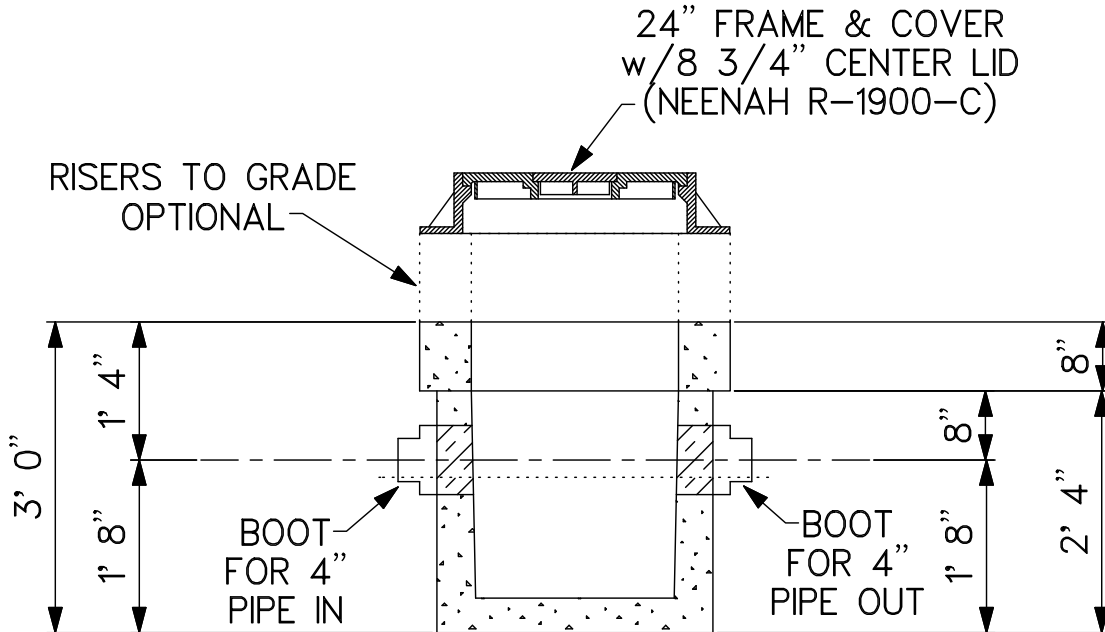
DATE: 9/22/08

DWG: GT-7500

**7,500 GALLON
GREASE INTERCEPTOR**



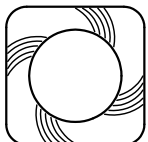
PLAN VIEW



SECTION VIEW

NOTES:

1. SAMPLE BOX SHIPPED WITH LID LOOSE TO BE ASSEMBLED BY THE CONTRACTOR. HEAVIEST LIFT APPROXIMATELY 1,600 LBS.
2. GRADE RINGS OPTIONAL AT EXTRA COST
3. ALL PIPING PROVIDED & INSTALLED BY THE CONTRACTOR



CLEAR FLOW
 BY **CP & P**
 CONCRETE PIPE & PRECAST, LLC
 (800) 648 - 2678

SCALE: NONE

DATE:

DWG: SAMPLE BOX

**SAMPLE
 BOX**