



Precast Cable Trough



Precast Cable Trough

Use

Precast cable trough sections are recommended for installations where data cables require a subsurface chase for routing, installation and maintenance, typically along light rail or commuter rail lines. Removable composite top sections are available to fit with the precast cable troughs.

Sizes

Precast cable trough sections are normally available in 24 inch, 30 inch, and 36 inch widths and in 10 foot and 20 foot long sections. Transition units are available to connect cable trough sections of different widths.

Application

Precast cable trough sections can be used for the following:

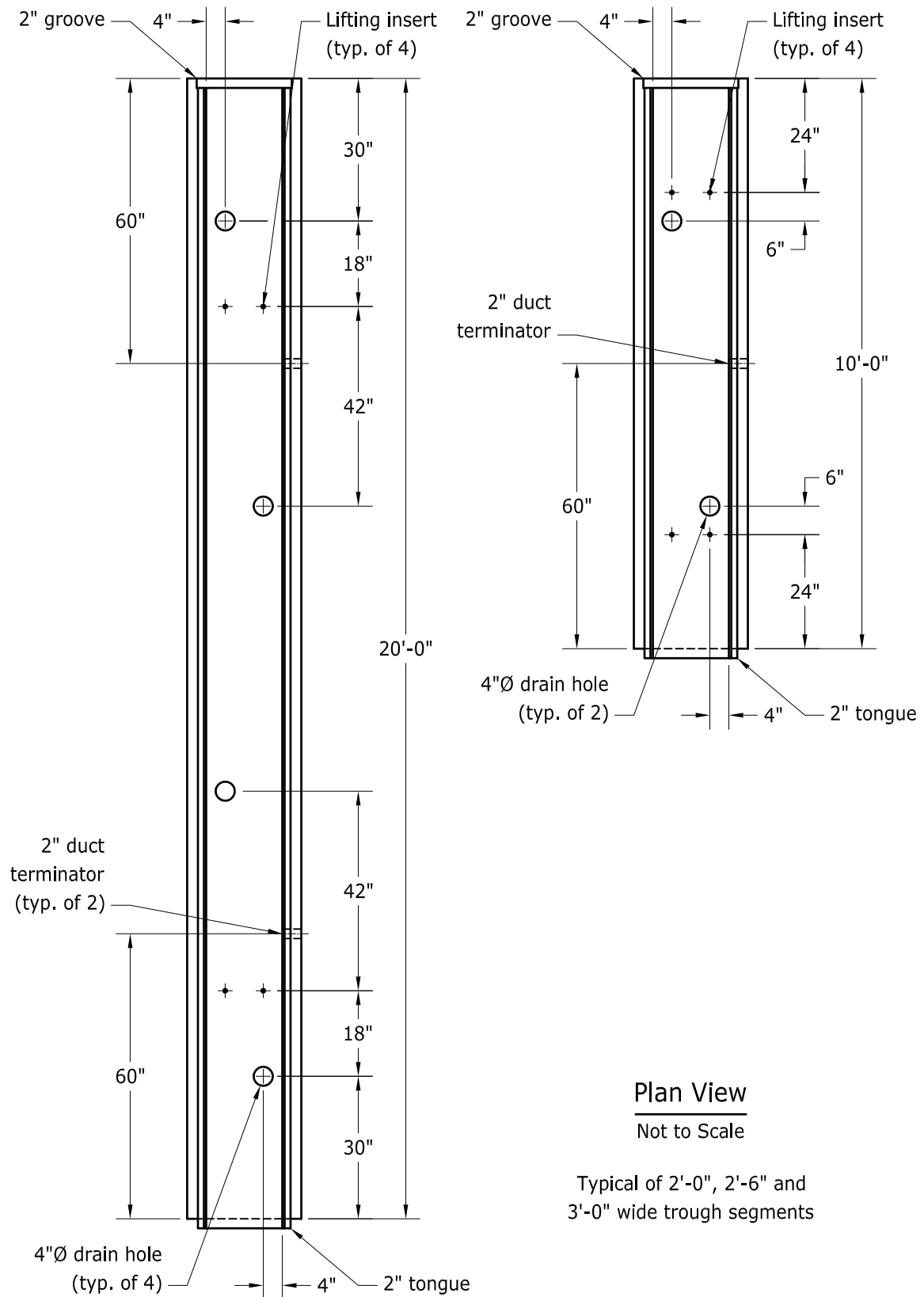
- light rail
- commuter rail
- subways
- data lines
- communications

Joints

Precast cable trough sections are produced with tongue and groove joints.

Cable Trough Sections

20170301HJG01



Plan View

Not to Scale

Typical of 2'-0", 2'-6" and 3'-0" wide trough segments

Note:

(1.) Designed for HS-20 Loading.

-No Scale-

All dimensions subject to allowable specification tolerances.

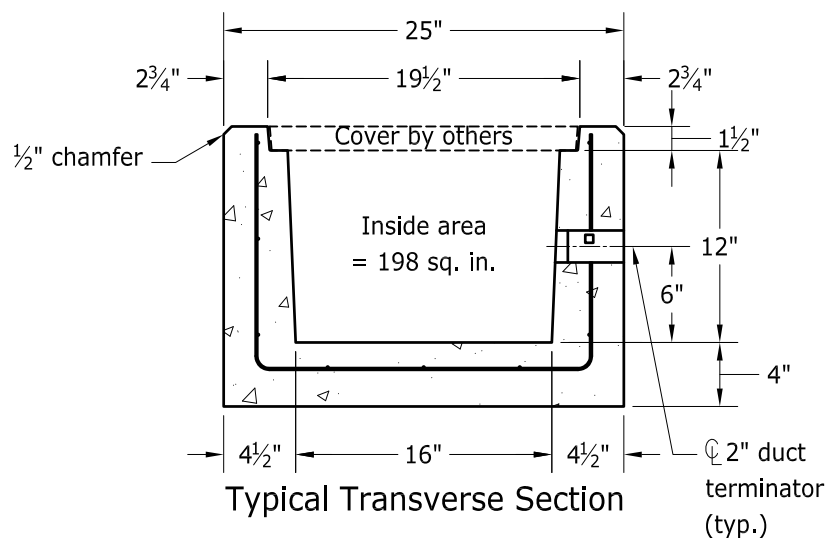
TITLE

**Precast Concrete Cable Trough
Plan View**

DATE

03-01-17

CP&P




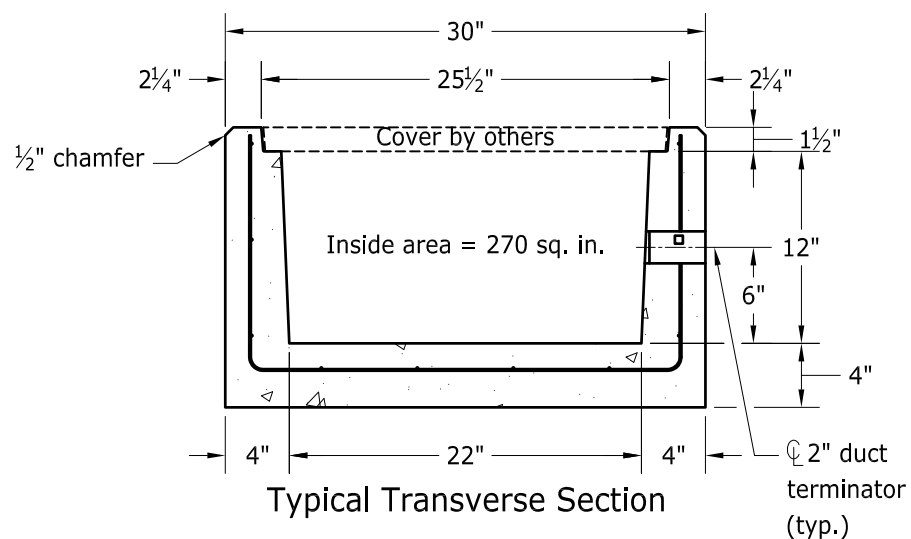
Typical Transverse Section

2'-0" Cable Trough

Approximate Weight = 220 lb per lin. ft

-No Scale-
All dimensions subject to allowable specification tolerances.

TITLE	DATE	
Precast Concrete Cable Trough 24" Width Section	03-01-17	




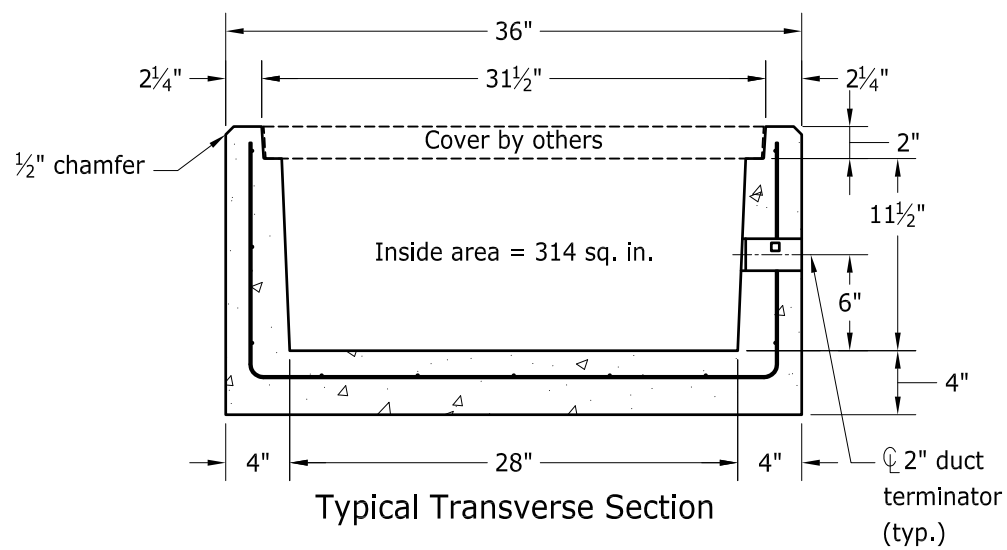
Typical Transverse Section

2'-6" Cable Trough

Approximate Weight = 230 lb per lin. ft

-No Scale-
All dimensions subject to allowable
specification tolerances.

TITLE	DATE	
Precast Concrete Cable Trough 30" Width Section	03-01-17	

3'-0" Cable Trough

Approximate Weight = 250 lb per lin. ft

-No Scale-

All dimensions subject to allowable specification tolerances.

TITLE

**Precast Concrete Cable Trough
36" Width Section**

DATE

03-01-17

CP&P

Ashland, VA

Charleston, SC

Hanover, VA

Summerville, SC

Harrisonburg, VA

Dunn, NC

Martinsburg, WV

Oakboro, NC

Salem, VA

Rincon, GA

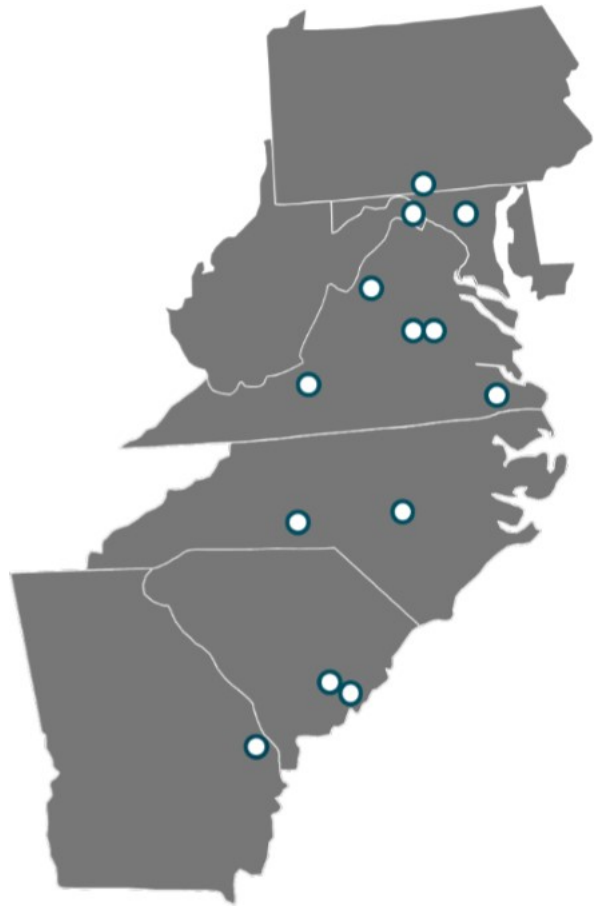
Chesapeake, VA

Greencastle, PA

Jessup, MD

Manassas, VA

Main Phone: 1-800-999-2278 (CAST)



We are committed to making Concrete Pipe & Precast the preferred supplier for our customers by delivering outstanding value, continuous innovation, and exceptional customer experience by consistently fulfilling our promise:

"Not Just Concrete, Concrete Solutions"